

PROPANE GAS SAFETY



What you and
your family
need to know

PROPANE GAS SAFETY

What you and your family need to know...

Propane is a safe, economical and environmentally friendly fuel. It can be used to heat homes and water, cook indoors and out, dry clothes and heat pools and spas. In properly maintained and



Smell gas... act fast!

operated systems, propane is safe, but like any other fuel gas it must be handled with care and can be dangerous if leaked or spilled. Propane has an odour - a scent similar to rotten eggs or boiling cabbage - so you can easily detect it. Propane is heavier than air, so when checking for leaks, be aware that it gathers in low-lying areas.

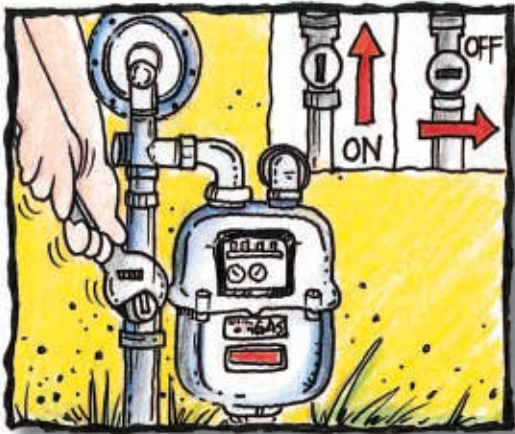
What to do if you smell propane

If you think you smell propane:

- Extinguish all smoking materials and open flames.
- Do NOT touch electrical switches.
- Do NOT light matches or create any other source of ignition.
- Leave the premises.
- Get everyone out of the building or vehicle IMMEDIATELY. Move upwind, away from the smell.
- Go to a nearby phone and call your propane supplier, 911 or your Fire Department emergency number.
- Do NOT re-enter the area until it is safe.
- After the area has been deemed safe, a service technician must repair the leak, turn on the propane, check all the propane appliances and re-light the pilots on the appliances.

In an emergency can I shut off my propane supply?

Yes, if it is necessary to turn off your propane supply before the propane supplier or Fire Department arrives, you should know the



Know how to turn off gas supply

proper procedure. Give the valve at the meter a quarter turn in either direction so that the lever is crosswise to the pipe to turn it off.

If you are not sure how to shut off the gas supply from your tank or cylinder, contact your propane supplier for instructions.

Can I turn the meter on again?

Leave it to an expert. Once the propane is shut off, a qualified technician who can check out the appliances and venting should turn it back on.

General Safety Reminders

Always store your propane cylinders outside in a well ventilated and secure location - never inside an enclosed building.

Propane can cause severe frostbite if it comes in contact with your skin or eyes. Keep your head away from the valves on your tank or cylinder. A sudden release of propane liquid from the safety valve could result in serious injury.

Keep your tank painted a white, aluminum or other reflective colour. A rusty, unpainted or dark-coloured tank does not reflect sunlight and may absorb heat causing an increase in pressure, leading to a possible discharge from the pressure release valve.

All lines not attached to appliances must be closed and terminated with caps or plugs.

Treat all propane gas odours seriously. Contact your propane supplier, 911 or your Fire Department emergency number if you suspect a leak.

If you or a member of your family has concerns about your ability to smell propane, consider the purchase of a propane gas alarm. But remember, while an alarm may provide an extra measure of warning, it should never be relied upon as a substitute for regular inspection and maintenance of propane appliances.

Barbecuing Safety

- ❑ Inspect and clean your gas barbecue before using it for the first time each season. If the fittings, flex hose or burners are worn or rusted, replace them. Use a flexible brush (made for this purpose) to clean the tubes between the gas valve and the burner, as blockages can occur due to spiders or insects. Replace missing or worn “O” rings.
- ❑ Always check the cylinder connections for leaks before lighting for the first time each season or any time you have replaced the tank. Use a leak-detection solution (or 50% liquid soap and water) to check all connections for tightness. Do not use matches or a lighter to check for leaks.
- ❑ Always use your grill outdoors in a well-ventilated area clear of the house or other combustibles. Never use it inside.
- ❑ Always open the barbecue lid before lighting.
- ❑ Never leave the barbecue unattended while cooking. Children should be taught to stay away from the barbecue as it may cause serious burn injuries.
- ❑ Use or store cylinders in an upright, vertical position. Store cylinders outdoors away from heat or sources of ignition (matches, smoking materials, etc.), in a secure, well ventilated area.
- ❑ Before a cylinder is refilled, have the supplier check for dents, damage, rust or leaks. Cylinders do not last forever. The cylinders must be inspected and re-qualified or replaced every ten years. A date stamp on the collar of the cylinder indicates when it was last qualified.
- ❑ When transporting after fill-up, take the cylinder home immediately. Never leave it in your vehicle. Secure and transport in an upright position keeping the area where the cylinder is located ventilated with the cylinder valve closed and plugged or capped.



- ❑ When not in use, make sure the grill burner controls are turned off and the cylinder valve is closed.
- ❑ Make sure the gas grill is shut off and completely cooled before covering it after use.

Know how to turn off gas supply



Have regular inspections and maintenance

Appliance Operations and Maintenance

Refer to the manuals provided with your appliances. They contain operating and maintenance instructions. Have a Gas Contractor service your appliances, vents and combustion air opening regularly to ensure safe and reliable operation. If you are in an earthquake susceptible zone, ask the contractor to ensure your water heater has been secured as an earthquake-preparedness precaution.

Propane appliances, like any other gas appliance, can produce carbon monoxide if not maintained properly. Always be sure your home, camper, or RV is properly ventilated, and install approved carbon monoxide detectors (products with CSA 6.19-01 on the packaging). More than one may be required if sleeping areas are located on different levels of your home.

Meter Tips

If you are served propane by meter:

- Know where your propane meter is.
- Keep it clear for emergency responses.
- Know how to shut off your propane at the meter.
- Keep a wrench in a convenient location.
- Do not enclose your meter.
- Do not tie pets or other objects to the meter or outside propane pipes.

Keep your Meter Clear

Accumulated snow and ice places stress on your meter piping. Damage to the piping can cause a leak. Blocked regulator vents can dangerously over-pressure the system, affect appliance operation and affect service.



Keep meter clear!

- Keep the meter clear of ice and snow.
- Do not shovel snow up against the meter.
- Take care in using a snow blower or plow near your meter.
- Keep eavetroughs clear and in good repair so that water does not drip on the meter and cause ice build-up on your propane meter or piping.

Call Before You Dig



If underground pipes bring propane to your house, **Call Before You Dig** before making an addition to your home, doing major landscaping or installing fence posts. Check your local directory for the phone number.

Call before you dig

Jointly Sponsored By:



Office of the
Fire Commissioner,
Victoria, B.C.



PROPANE
PROPANE GAS
ASSOCIATION OF CANADA INC.
ASSOCIATION CANADIENNE DU
GAZ PROPANE INC.



This brochure is not intended to provide comprehensive advice on safety and injury procedures. No liability whatsoever is assumed for any injuries, damages or losses that may arise out of its use.

© Copyright 2004 All Rights reserved

mktg-04-40